

BASE SIZE MEDIUM SPEC - not final

Chest 1" from AH	19 1/2"
Sweep 1/2 circ - straight	24 1/2"
Front length from HSP	35 1/4"
Overarm lngth frm shldr - slv edge	24 1/2"
Waist 1/2 circ 16 1/2" from HSP	19"
Neck width	6 3/4"
Cross shoulder	15 1/2"
Cross front 5" down frm HSP	14 1/2"
Cross back 5" down frm HSP	15"
Front neck drop	3"
Back neck drop	1 3/8"
Sleeve opening	4"
Shoulder slope frm HSP	1 1/2"
Armhole straight	8"
Bicep 1" frm armhole	7 1/4"

DETAILS:

- \* 92% Polyester /8% Spandex, Jersey 168 gsm
- \* Spec and fit as per spec.
- \* 5/8" twin needle coverseam at sweep hem
- \* Shaped hem with A line silhouette
- \* Self pouch for pants



Snow Llama Print



Trim colour:



11-0103 TCX

Yoga Pug Print



Trim colour:



15-5218 TCX

Sleepy Sloth Print



Trim colour:



15-1626 TCX

Winter Unicorn Print



Trim colour:



17-2031 TCX

Sheep Print



Trim colour:



17-3920 TCX

Bear Plaid Print

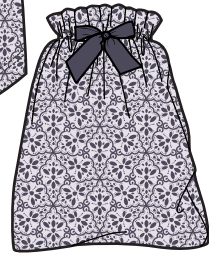


Trim colour:



Black (must match print)

Lace Print



Trim colour:



19-3915 TCX

Knit Houndstooth Print

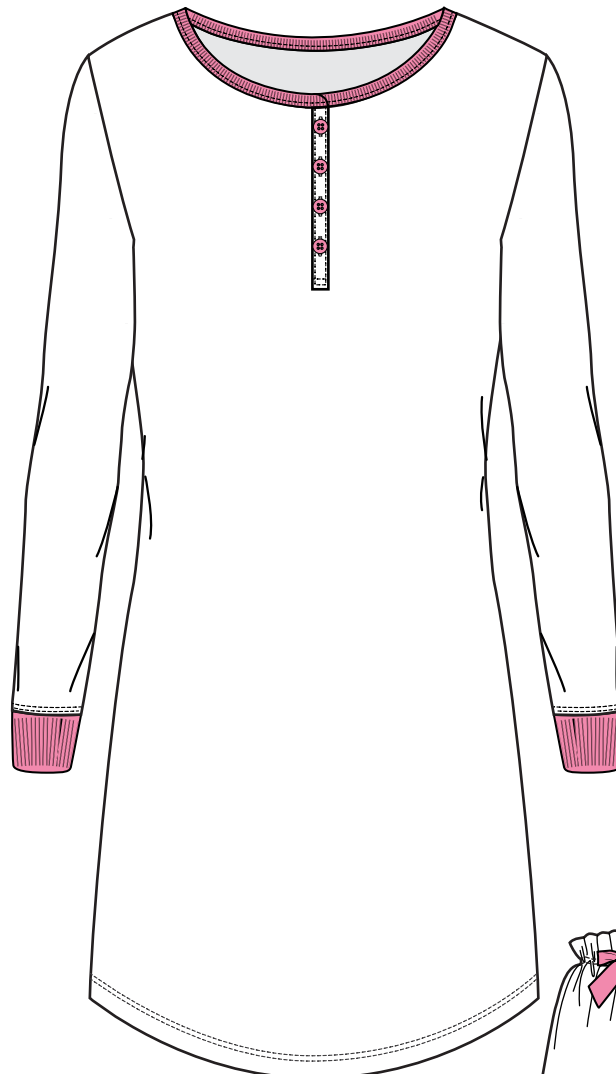


Trim colour:



19-4008 TCX

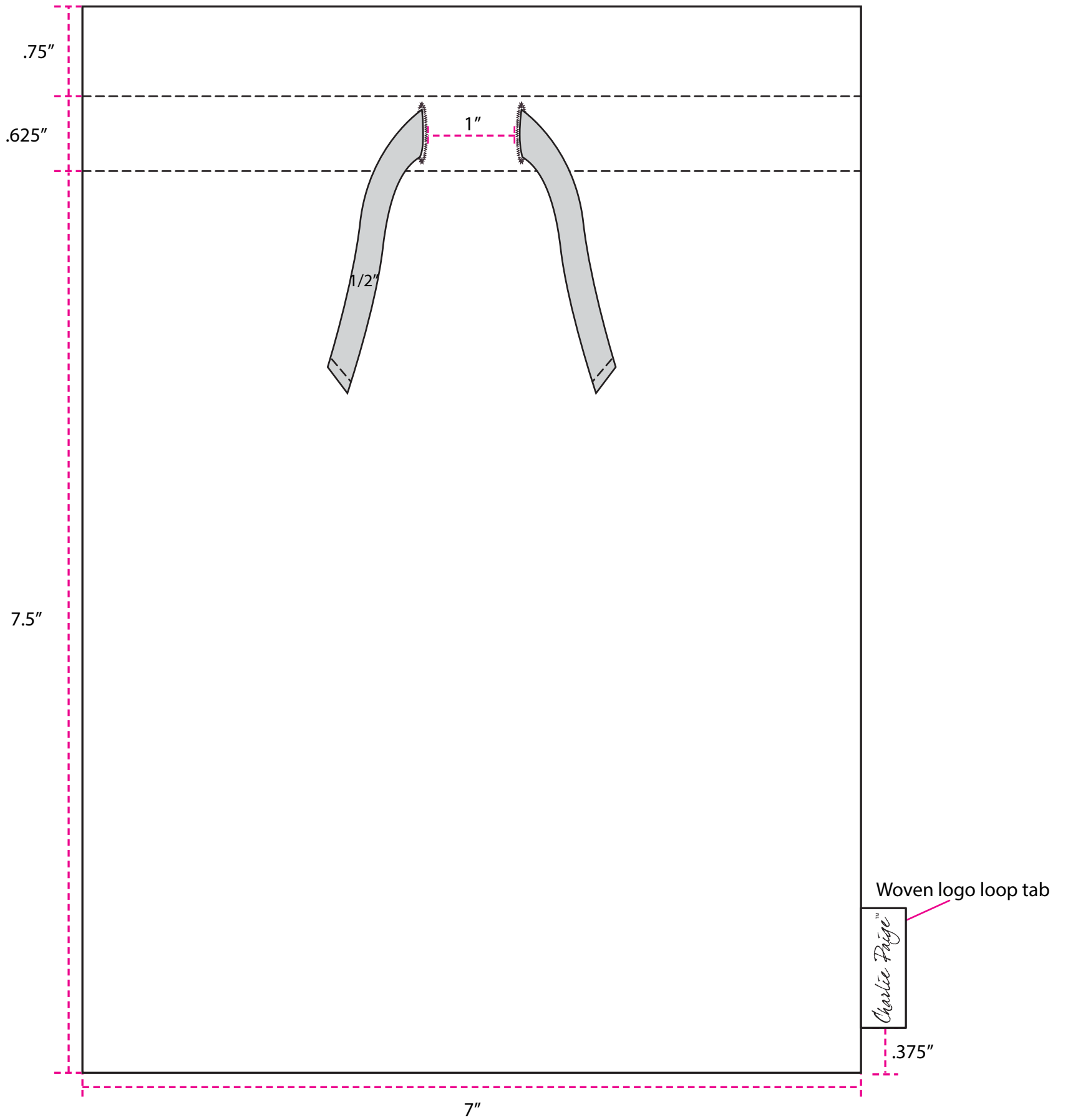
Paris Never Sleeps Print



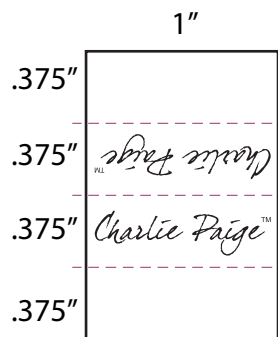
Trim colour:



15-2216 TCX



Woven logo loop tab  
\*Actual size



DETAILS:

- \* Jersey XXXgsm, same as the pants
- \* Twil tape or grossgrain drawstring that matches the pants